



Site Address	1101 ELLER DRIVE, DANIA BEACH	ID #	5042 23 29 0012
Property Owner	PARK'N GO OF FORT LAUDERDALE LLC	Millage	0412
Mailing Address	PO BOX 643804 VERO BEACH FL 32964	Use	28
Abbreviated Legal Description	PHILLIPS INDUSTRIAL PARK 175-23 B PORTION OF PARCEL A DESC AS COMM NE COR PAR A,S 551.19 TO POB,S 259.85,SWLY ARC DIST 307.59,SWLY ARC DIST 440.02,WLY ARC DIST OF 32.46,N 469.76,W 145,NW 30,N 199.95,E 694.95 TO POB		

The just values displayed below were set in compliance with **Sec. 193.011, Fla. Stat.**, and include a reduction for costs of sale and other adjustments required by **Sec. 193.011(8)**.

Property Assessment Values					
Click here to see 2014 Exemptions and Taxable Values as reflected on the Nov. 1, 2014 tax bill.					
Year	Land	Building	Just / Market Value	Assessed / SOH Value	Tax
2015	\$2,733,790	\$288,410	\$3,022,200	\$3,022,200	
2014	\$2,733,790	\$288,410	\$3,022,200	\$3,022,200	\$67,608.50
2013	\$2,733,790	\$288,410	\$3,022,200	\$3,022,200	\$68,333.22

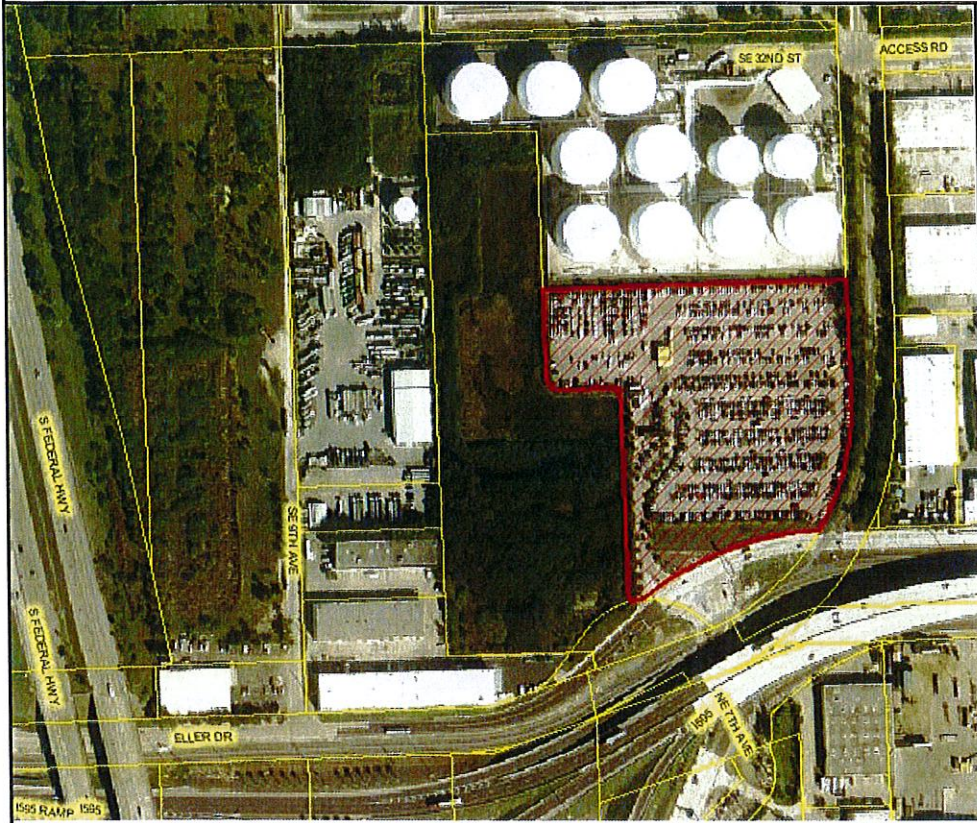
2015 Exemptions and Taxable Values by Taxing Authority				
	County	School Board	Municipal	Independent
Just Value	\$3,022,200	\$3,022,200	\$3,022,200	\$3,022,200
Portability	0	0	0	0
Assessed/SOH	\$3,022,200	\$3,022,200	\$3,022,200	\$3,022,200
Homestead	0	0	0	0
Add. Homestead	0	0	0	0
Wid/Vet/Dis	0	0	0	0
Senior	0	0	0	0
Exempt Type	0	0	0	0
Taxable	\$3,022,200	\$3,022,200	\$3,022,200	\$3,022,200

Sales History			
Date	Type	Price	Book/Page or CIN
10/22/2010	SWD-D	\$7,970,000	47475 / 1048
2/23/2004	SW*	\$3,000,000	36966 / 545

Land Calculations		
Price	Factor	Type
\$8.00	341,724	SF
Adj. Bldg. S.F. (Card, Sketch)		

* Denotes Multi-Parcel Sale (See Deed)

Special Assessments								
Fire	Garb	Light	Drain	Impr	Safe	Storm	Clean	Misc
04								
A								
498								



Streets
Parcels
Aerials (2015)
County Boundary

Map

0 136 ft

Created on 7/22/2015 2:05:09 PM using ArcIMS 4.0.1. Source: Broward County Property Appraiser